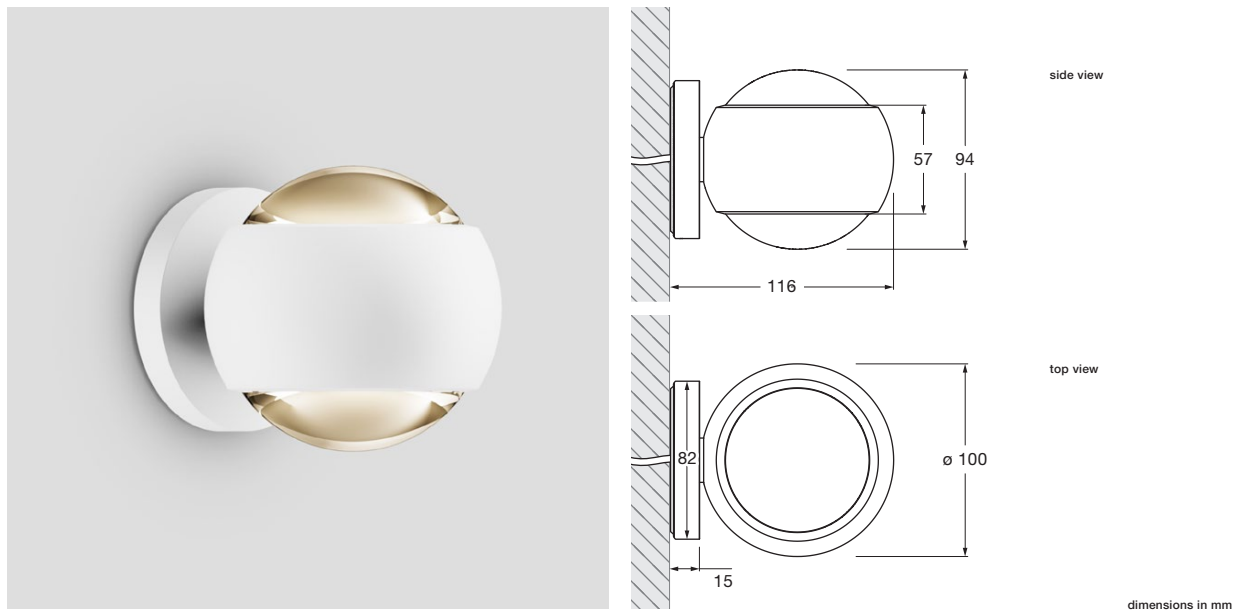


## io verticale VOLT datasheet

LED wall spotlight with double-sided light output, spherical head and lens optics. The light is freely rotatable (with stop), the lighting effects can be changed at any time through optional inserts using a simple mechanism. Surface combinations can be configured.

Version for mounting on plaster surfaces; connection to 230V AC / 50 Hz mains voltage; power 18W (13W version chrome, rose gold, bronze, phantom), dimmable via trailing-edge phase-cut dimmer\*. The VOLT light engine is replaceable.



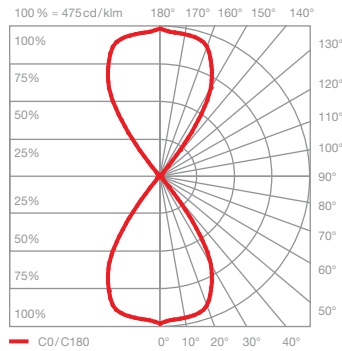
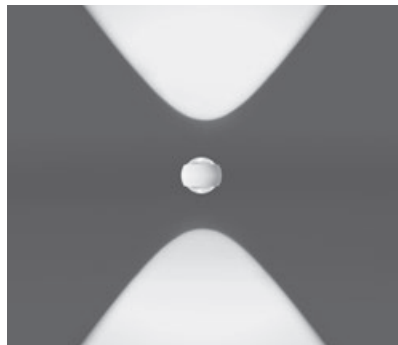
### technical data io verticale VOLT

properties	material	aluminium, chrome-plated, painted, anodised or PVC-coated, plastic, glass, optical plastic
	turning range head	360° (with stop)
	weight	1.0 kg
surface	head	matt gold (cover matt white or matt black), rose gold (cover matt black), bronze (cover schwarz matt), shiny chrome, weiß matt, schwarz matt, phantom, black phantom
VOLT light engine	average life time	> 40.000 hrs
	energy efficiency class	G
	power	18 W (13 W version shiny chrome, rose gold, bronze, phantom, black phantom)
	color rendering index	perfect color; CRI Ra 97
	color temperature	2700, 3000 K
	recommended use	residential and commercial
electricity	dimming	via trailing-edge phasecut dimmer*
	connection	230 V AC
	permitted operating conditions	max. 30°C for indoor use only

\* For a list of compatible dimmers, see [www.occhio.de/dim\\_en](http://www.occhio.de/dim_en), trailing-edge phasecut dimmer



## io verticale VOLT lighting effects



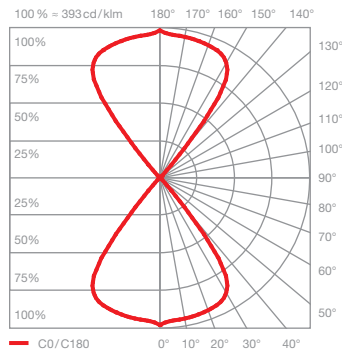
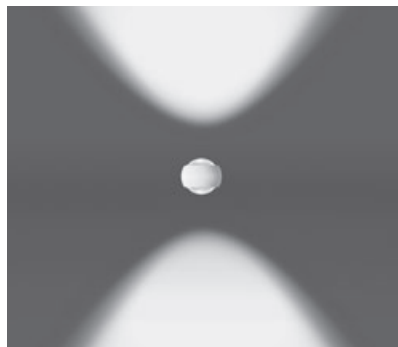
**io verticale D**  
directed light with contour beam angle  
(approx. 80°)\*

inserts: lens

luminous flux: perfect color 18 W 1020 lm

perfect color 13 W 750 lm

\*without aperture



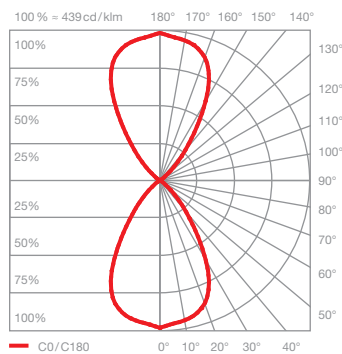
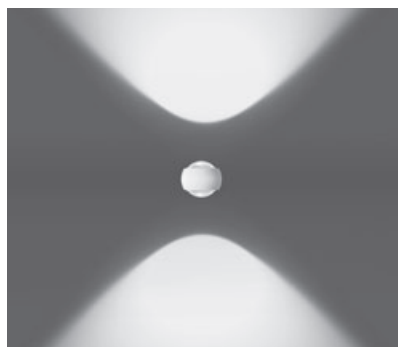
**io verticale D with soft edge glass**  
directed light with soft contour beam angle  
(approx. 80°)

inserts: lens  
soft edge glass\*\*

luminous flux: perfect color 18 W 900 lm

perfect color 13 W 670 lm

\*\*Included in the scope of delivery

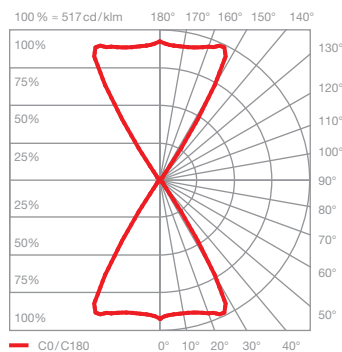
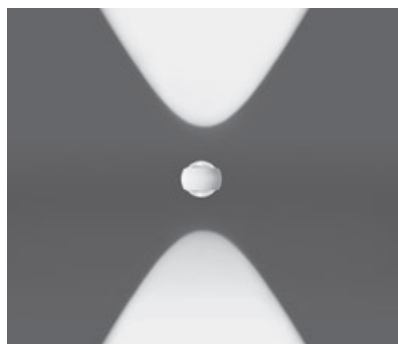


**io verticale D with satinised glass**  
directed light with soft contour beam angle  
(approx. 100°)

inserts: lens  
satinised glass

luminous flux: perfect color 18 W 790 lm

perfect color 13 W 580 lm



**io verticale D with fresnel lens**  
bundled light  
beam angle approx. 60°

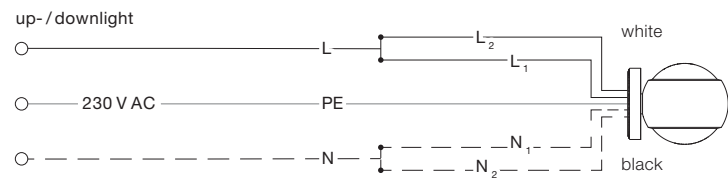
inserts: lens  
fresnel lens

luminous flux: perfect color 18 W 860 lm

perfect color 13 W 640 lm

## connection diagram

### up / downlight simultaneously



### up / downlight individually

Flush-mounted or hollow ceiling box necessary.

